



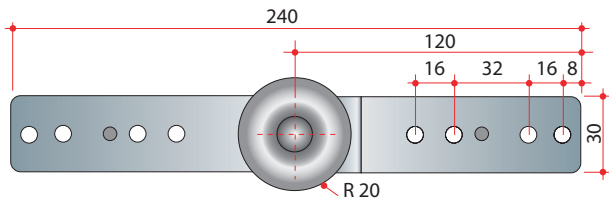
Cerniera / Hinge

CLOCK



Su richiesta, insieme alla cerniera CLOCK può essere fornita anche la piastra di fissaggio (evidenziata in rosso).

On demand, the CLOCK hinge can be supplied with the L-shaped fixing plate (marked red on the picture).



**PER STRUTTURE IN LEGNO
FOR WOODEN STRUCTURES**

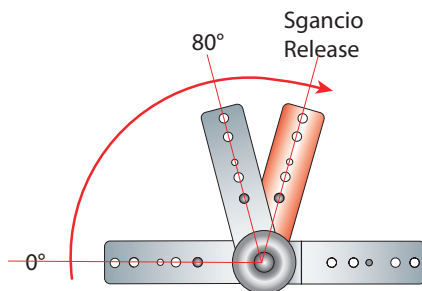
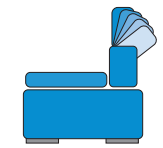
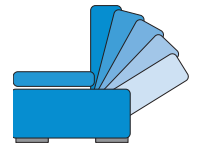
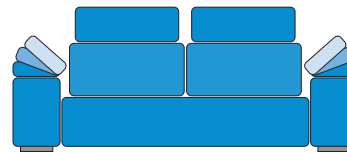
Dopo il successo delle cerniere EXTRA presentiamo la Cerniera CLOCK adatta alle strutture in legno per reclinare braccioli, schienali e poggiatesta. Dotata di elevata capacità di carico grazie alla sua realizzazione in acciaio ad alta resistenza, è disponibile in diverse posizioni di lavoro variabili da 3 a 7 scatti con passo ogni 15°.

After the success of the EXTRA hinges, we present the CLOCK hinge for the reclining of armrests, backrests and headrests in wooden structures. It is made of highly resistant steel, therefore it boasts great loadbearing capacity. It has from 3 to 7 working positions with pitch every 15°.

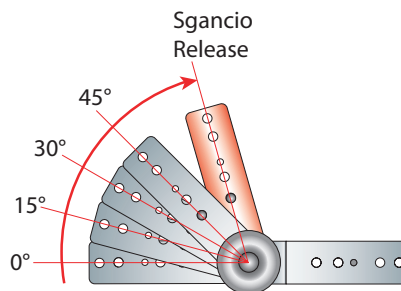
Questi prodotti sono utilizzabili per
BRACCIOLI, POGGIATESTA
e SCHIENALI

These products can be used for
ARMRESTS, HEADRESTS and
BACKRESTS

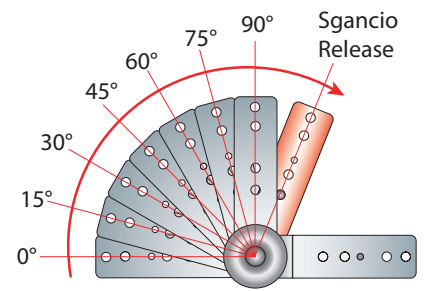
Esempi di applicazione
Example of use



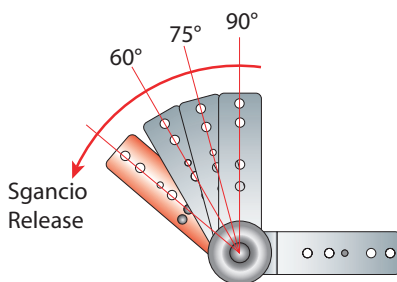
Cod. **CLOCK1D**



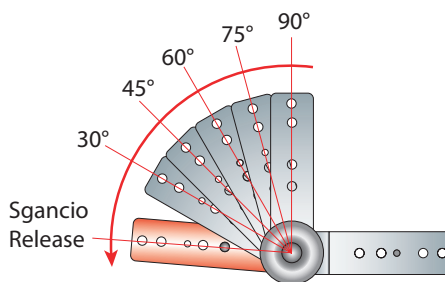
Cod. **CLOCK4D**



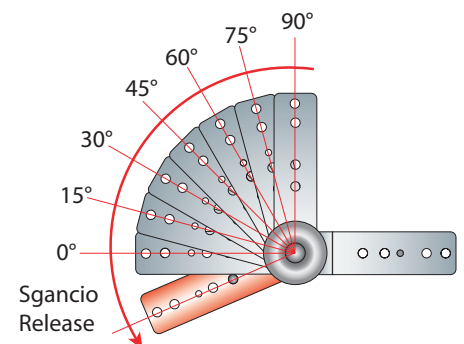
Cod. **CLOCK7D**



Cod. **CLOCK3R90**



Cod. **CLOCK5R90**



Cod. **CLOCK7R**